

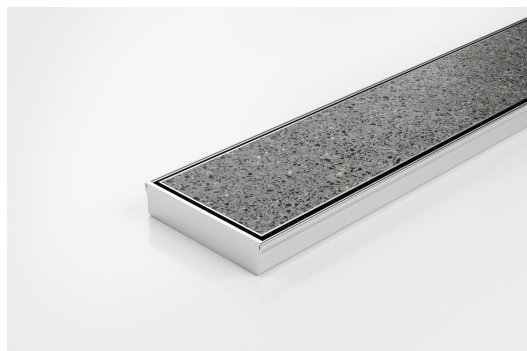


ARCHITECTURAL
GRATES + DRAINS



100TiiCO20

Tile Insert Drain



Full stainless steel Tile Insert drain with centre outlet

The 100TiiCO20 is a fully finished ready to install all stainless steel drain unit featuring a Tile Insert Frame manufactured from 1.5mm thick 316 marine grade stainless steel.

Suitable for tiles up to 10mm thick.

Code 100TiiCO20

Range 100

Grate Style Ti

Category Fixed-Length Units

Channel Material Stainless Steel

Steel Grade 316

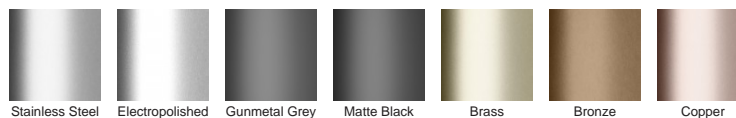


Grates longer than 1500mm supplied in sections. Tile Inserts longer than 1200mm supplied in sections. Channels over 3000mm supplied in sections with joiner. +/-2mm tolerance on dimensions.

SPECIFICATIONS + DIMENSIONS

Channel Width	106mm
Channel Depth	23mm
Length(s)	900mm 1000mm 1200mm
Outlet Size	DN80

STORMTECH COLOUR FINISHES



Electroplate finishes subject to natural variation with time and local environment. Factors such as pools/surf beaches may require electropolishing. Contact us for suitability.

PRODUCT APPLICATIONS

- | | |
|-----------------------------|----------------------------|
| Bathroom Drainage | Shower Drainage |
| Aged / Health Care Drainage | Multi-Residential Drainage |
| Balcony Drainage | Special Needs Drainage |
| Commercial Drainage | Threshold Drainage |
| Hospitality Drainage | Wet Area Drainage |
| Paved Area Drainage | |

Copyright © Stormtech Pty Ltd. Patent 733361. Drawings not to scale, please use dimensions shown. Downloaded 20/05/2026 (please check for updates)



Visit stormtech.com.au
for tools + inspiration.

Phone **1300 653 403**

Email info@stormtech.com.au